

# WMEA Junior All-State Jazz Band

## Bass

### Track 2: Blues in Bb

Swing feel ♩ = 112

Chords:  $E_b7$ ,  $E_b7$ ,  $Bb7$ ,  $E_b7$ ,  $Bb7$ ,  $G7$ ,  $C^{MIN}7$ ,  $F7$ ,  $Bb7$ ,  $F7$

### Track 3: Ballad Style in F

Med. slow straight eighths ♩ = 72

### Track 4: Latin Style in Concert Eb

Latin groove ♩ = 132

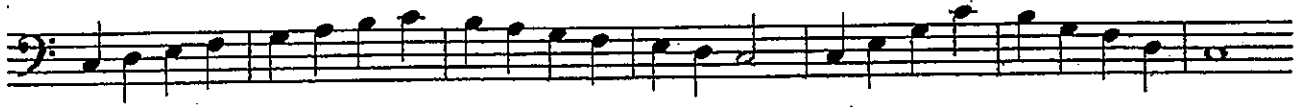
Dynamic markings: *mp*, *f*

Music by Mike Mines and Linda Pilcher.  
Piano parts by Ellen Rowe.

©Washington Music Educators Association 2019-2020

# Major Scales and Arpeggios

C Major



F Major



Bb Major



Eb Major



Ab Major



Db Major



Gb Major



B Major

A musical staff in bass clef with a key signature of two sharps (F# and C#). The staff contains a sequence of notes and chords, including a final whole note chord.

E Major

A musical staff in bass clef with a key signature of three sharps (F#, C#, and G#). The staff contains a sequence of notes and chords, including a final whole note chord.

A Major

A musical staff in bass clef with a key signature of three sharps (F#, C#, and G#). The staff contains a sequence of notes and chords, including a final whole note chord.

D Major

A musical staff in bass clef with a key signature of two sharps (F# and C#). The staff contains a sequence of notes and chords, including a final whole note chord.

G Major

A musical staff in bass clef with a key signature of one sharp (F#). The staff contains a sequence of notes and chords, including a final whole note chord.

# Natural Minor Scales and Arpeggios

A minor



D minor



G minor



C minor



F minor



B $\flat$  minor

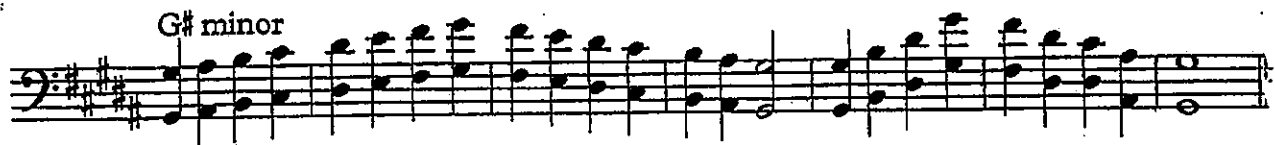


E $\flat$  minor




2.

G# minor



A musical staff in bass clef with a key signature of two sharps (F# and C#). The scale is written in G# minor, starting on G# and ending on G#.

C# minor



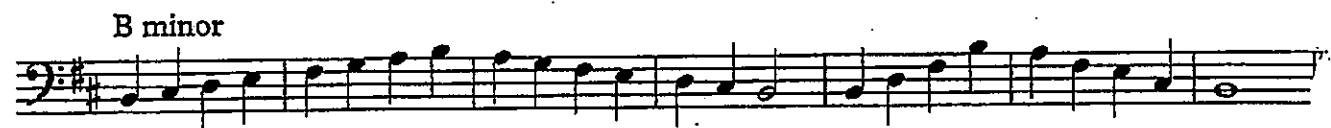
A musical staff in bass clef with a key signature of two sharps (F# and C#). The scale is written in C# minor, starting on C# and ending on C#.

F# minor



A musical staff in bass clef with a key signature of two sharps (F# and C#). The scale is written in F# minor, starting on F# and ending on F#.

B minor



A musical staff in bass clef with a key signature of two sharps (F# and C#). The scale is written in B minor, starting on B and ending on B.

E minor



A musical staff in bass clef with a key signature of two sharps (F# and C#). The scale is written in E minor, starting on E and ending on E.

# WMEA Junior All-State Band Audition Materials

Track 1 - Scale Etude  
♩ = 60

The score is for a 4/4 piece in B-flat major, marked 'Track 1 - Scale Etude' with a tempo of ♩ = 60. It features a full band of instruments. The dynamics start at *mf* and increase through a *cresc.* to *f*. The Snare Drum part includes a rhythmic pattern:  $\text{R L R R} \text{L R L L} \text{L R R R} \text{L R}$  in the first measure,  $\text{L R L L} \text{R L R R} \text{L R L L} \text{R R L}$  in the second, and  $\text{R L R L R L R}$  in the third.