

# WMEA Junior All-State Jazz Band

## Trombone

### Track 2: Blues in Bb

Swing feel ♩ = 112

5

9

### Track 3: Ballad Style in F

Med. slow straight eighths ♩ = 72

*mf* *f* *mp*

5 *f* *p*

### Track 4: Latin Style in Concert Eb

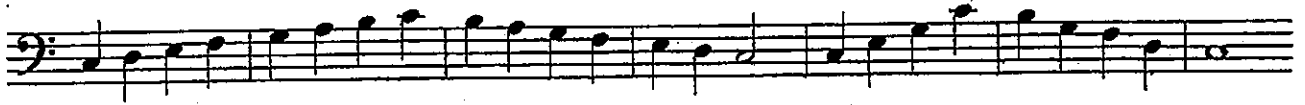
Latin groove ♩ = 132

*mf*

5 *mp* *f*

# Major Scales and Arpeggios

C Major



F Major



Bb Major



Eb Major



Ab Major

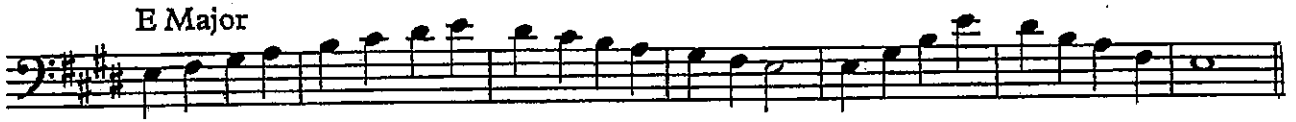


Db Major



Gb Major



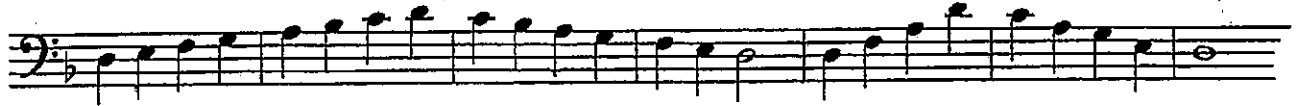


# Natural Minor Scales and Arpeggios

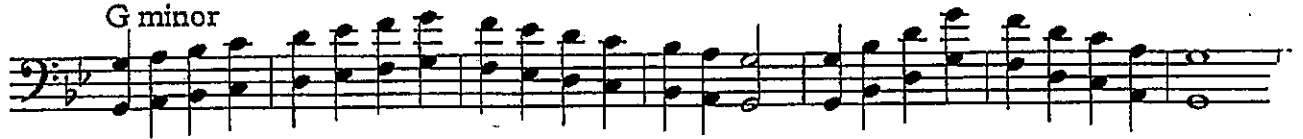
A minor



D minor



G minor



C minor



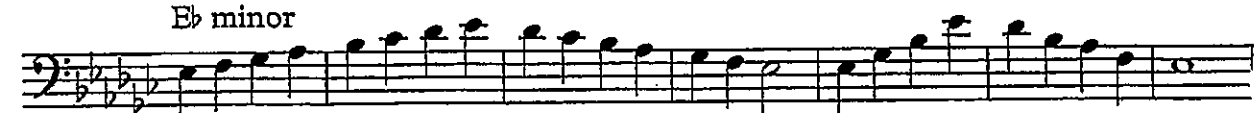
F minor



Bb minor



Eb minor



2.

G# minor



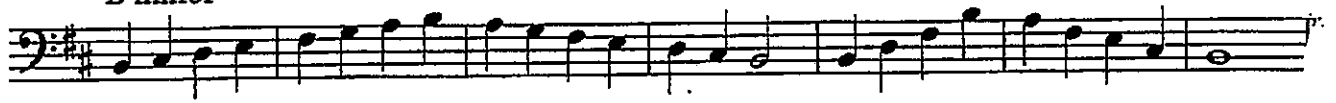
C# minor



F# minor



B minor



E minor



# WMEA Junior All-State Band Audition Materials

## Track 1 - Scale Etude

♩ = 60

The score is for a 4/4 time signature piece in B-flat major. It features 17 staves for different instruments. The dynamics are marked as *mf* (mezzo-forte) at the beginning of each staff and *f* (forte) at the end. A *cresc..* (crescendo) marking is placed in the middle of each staff. The Snare Drum part includes a rhythmic pattern of eighth notes with a dynamic of *mf* and a *cresc..* marking. The pattern is:  $\underline{R} \underline{L} \underline{R} \underline{R} \underline{L} \underline{L} \underline{L} \underline{R} \underline{L} \underline{R} \underline{R} \underline{L} \underline{L} \underline{R}$  in the first measure,  $\underline{L} \underline{R} \underline{L} \underline{L} \underline{R} \underline{L} \underline{R} \underline{R} \underline{L} \underline{R} \underline{L} \underline{L} \underline{R} \underline{L} \underline{L}$  in the second measure,  $\underline{R} \underline{L} \underline{R} \quad \underline{L} \underline{R} \underline{L} \quad \underline{R} \underline{L} \underline{R} \quad \underline{R}$  in the third measure, and  $\underline{R}$  in the fourth measure.