

# WMEA Junior All-State Jazz Band

## Trumpet in B $\flat$

### Track 2: Blues in B $\flat$

Swing feel ♩ = 112

Musical notation for Track 2: Blues in B $\flat$ . The piece is in 4/4 time with a swing feel and a tempo of 112 beats per minute. The notation consists of three staves of music. The first staff begins with a treble clef, a key signature of two flats (B $\flat$ ), and a 4/4 time signature. The melody features eighth and sixteenth notes with various articulations such as accents and slurs. The second staff starts at measure 5, and the third staff starts at measure 9. The piece concludes with a double bar line.

### Track 3: Ballad Style in F

Med. slow straight eighths ♩ = 72

Musical notation for Track 3: Ballad Style in F. The piece is in 4/4 time with a medium-slow tempo of 72 beats per minute. The notation consists of two staves of music. The first staff begins with a treble clef, a key signature of one sharp (F), and a 4/4 time signature. The melody is characterized by long, sweeping lines with slurs and dynamic markings of *mf*, *f*, and *mp*. The second staff starts at measure 5 and concludes with a double bar line.

### Track 4: Latin Style in Concert E $\flat$

Latin groove ♩ = 132

Musical notation for Track 4: Latin Style in Concert E $\flat$ . The piece is in 4/4 time with a Latin groove feel and a tempo of 132 beats per minute. The notation consists of two staves of music. The first staff begins with a treble clef, a key signature of three flats (E $\flat$ ), and a 4/4 time signature. The melody features eighth and sixteenth notes with accents and slurs, and a dynamic marking of *mf*. The second staff starts at measure 5 and concludes with a double bar line.

Music by Mike Mines and Linda Pilcher.

Piano parts by Ellen Rowe.

© Washington Music Educators Association 2019-2020

# Major Scales and Arpeggios

C Major



F Major



Bb Major



Eb Major



Ab Major



Db Major



Gb Major



B Major

Musical notation for the B Major scale in treble clef. The key signature has three sharps (F#, C#, G#). The scale is written in two measures, each containing eight notes: B, C#, D, E, F#, G#, A, B. The first measure is an ascending eighth-note scale, and the second measure is a descending eighth-note scale.

E Major

Musical notation for the E Major scale in treble clef. The key signature has two sharps (F#, C#). The scale is written in two measures, each containing eight notes: E, F#, G, A, B, C#, D, E. The first measure is an ascending eighth-note scale, and the second measure is a descending eighth-note scale.

A Major

Musical notation for the A Major scale in treble clef. The key signature has one sharp (F#). The scale is written in two measures, each containing eight notes: A, B, C, D, E, F#, G, A. The first measure is an ascending eighth-note scale, and the second measure is a descending eighth-note scale.

D Major

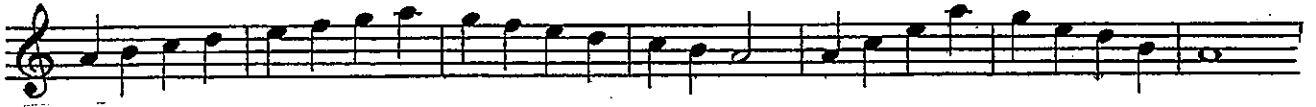
Musical notation for the D Major scale in treble clef. The key signature has two sharps (F#, C#). The scale is written in two measures, each containing eight notes: D, E, F#, G, A, B, C, D. The first measure is an ascending eighth-note scale, and the second measure is a descending eighth-note scale.

G Major

Musical notation for the G Major scale in treble clef. The key signature has one sharp (F#). The scale is written in two measures, each containing eight notes: G, A, B, C, D, E, F#, G. The first measure is an ascending eighth-note scale, and the second measure is a descending eighth-note scale.

# Natural Minor Scales and Arpeggios

A minor



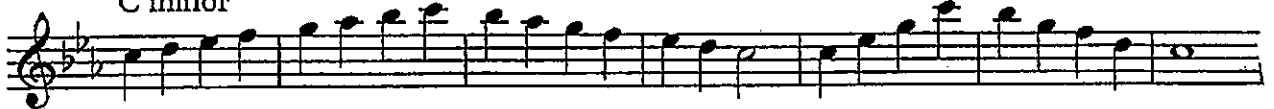
D minor



G minor



C minor



F minor



Bb minor



Eb minor




G# minor



A musical staff in treble clef with a key signature of three sharps (F#, C#, G#). The scale consists of the notes G#, A, B, C#, D, E, F#, G#, A, B, C#, D, E, F#, G#.

C# minor



A musical staff in treble clef with a key signature of three sharps (F#, C#, G#). The scale consists of the notes C#, D, E, F#, G, A, B, C#, D, E, F#, G, A, B, C#.

F# minor



A musical staff in treble clef with a key signature of three sharps (F#, C#, G#). The scale consists of the notes F#, G, A, B, C, D, E, F#, G, A, B, C, D, E, F#.

B minor



A musical staff in treble clef with a key signature of two sharps (F#, C#). The scale consists of the notes B, C, D, E, F, G, A, B, C, D, E, F, G, A, B.

E minor



A musical staff in treble clef with a key signature of one sharp (F#). The scale consists of the notes E, F, G, A, B, C, D, E, F, G, A, B, C, D, E.

Score

# WMEA Junior All-State Band Audition Materials

## Track 1 - Scale Etude

$\text{♩} = 60$

The score is for a 4/4 piece in B-flat major, marked  $\text{♩} = 60$ . It features a scale etude for all instruments. The dynamics are *mf* (mezzo-forte) at the beginning, *cresc..* (crescendo) in the middle, and *f* (forte) at the end. The Snare Drum part includes a rhythmic pattern of eighth notes with accents, indicated by the letters R and L.

**Flute**  
*mf* *cresc..* *f*

**Oboe**  
*mf* *cresc..* *f*

**Bassoon**  
*mf* *cresc..* *f*

**B♭ Clarinet**  
*mf* *cresc..* *f*

**Alto Clarinet**  
*mf* *cresc..* *f*

**Bass Clarinet**  
*mf* *cresc..* *f*

**Alto Sax**  
*mf* *cresc..* *f*

**Tenor Sax**  
*mf* *cresc..* *f*

**Baritone Sax**  
*mf* *cresc..* *f*

**B♭ Trumpet**  
*mf* *cresc..* *f*

**F Horn**  
*mf* *cresc..* *f*

**Trombone**  
*mf* *cresc..* *f*

**Euphonium**  
*mf* *cresc..* *f*

**Tuba**  
*mf* *cresc..* *f*

**Mallets**  
*mf* *cresc..* *f*

**Timpani**  
*mf* *cresc..* *f*

**Snare Drum**  
*mf* *cresc..* *f*

Rhythmic pattern for Snare Drum:  
R L R R L R L L R L R R L L R  
L R L L R L R R L R L L R R L  
R L R L R L R L R R L R L R R